



QUEEN BOUDICA PRIMARY SCHOOL



Tel: 01206 844654

Email: admin@qbps.essex.sch.uk

Website: www.qbps.essex.sch.uk

Address: Cowper Crescent,
Colchester, Essex, CO4 5XT

School Newsletter

Week Ending
8th Dec 2017

EYFS

This week the children have had a wonderful and busy week performing the Nativity. We are so proud of all the children for doing so well and I am sure you are too. They looked, sounded and acted amazingly especially as they have only been at school for one term.

Next Tuesday we are having a 'Winter Craft Activity Day'. If you are able to come along and join us/help out, we would love to have you. Please speak to your child's class teacher.

Also next week we will be sending home a questionnaire about your child's EYFS transition. We would love to hear your thoughts and feelings; it is completely anonymous. If you could please complete it and return it to the office it would be appreciated.

We have had a few 'itchy heads' this week. It would be great if everyone could have a check of their child's hair for newly arrived 'pets'.

Have a lovely weekend, see you on Monday!

Dear Parents and Carers,

I'm sure you'll agree that this week has seen a wonderful start to Christmas events in school. Congratulations to our pupils in Reception for their lovely Nativity play - it was so pretty to watch, and the singing was excellent. Well done also to everyone in Years 3 and 4 for their concert in St. Michael's Church last night. It was really enjoyable and so lovely to hear the Christmas story told in words and music. Thank you to the staff teams for all their hard work to prepare the children for these events - they were fantastic.

I'm sure your children will have told you about our library Christmas tree competition. Each class has decorated a tree according to their favourite book - and the results are amazing! The trees were paraded through the corridor with the whole school admiring and applauding each one. If you have a few minutes between now and the end of term at pick up time, please do pop in to have a look at the trees: the creativity and imagination of children and adults is fabulous! Voting closes today and the winner will be announced shortly. Thank you to Mrs. Morgan-Soane for initiating this event.

Next week we're looking forward to a production from Key Stage 1 pupils, and then our Christmas lunch next Friday. This coincides with national Christmas Jumper Day, run by the Save the Children charity. We hope that everyone will come to school wearing something festive - perhaps a Santa hat, jumper or t shirt with their school skirt or trousers. If you would like to make a small donation, please send the money to your child's class teacher: we will be sending all money raised to the Save the Children fund. Thank you for your kindness.

Have a great weekend everyone - keep warm!

Clare Woodward

Ms Clare Woodward
Head Teacher

Reception & KS1 Attendance & Punctuality Monitor


Attendance for this Week: **97.58%**

Harry the Happy Hippo Lenny the Learned Lion Daisy the Determined Dragon	Ash YrR 96.36%	Oak YrR 99.52%	Elm Yr1 97.60%	Beech Yr1 96.55%	Birch Yr2 96.21%	Hazel Yr2 99.35%
Absences	8	1	7	10	11	2
Lateness		2	2	3	6	

Gold = 98 -100%, Green = 95 - 97.9%, Grey = 91 - 94.9%, Blue = 85 - 90.9%, Red = <84.9%

KS2 Attendance & Punctuality Monitor

Attendance for this Week: **96.08%**

	Maple Yr3 96.55%	Rowan Yr3 95.52%	Holly Yr4 96.67%	Willow Yr4 97.33%	Hawthorn Yr5 96.55%	Sycamore Yr5 93.45%	Chestnut Yr6 97.33%	Aspen Yr6 95.16%
Absences	10	13	10	8	10	19	8	15
Lateness	1	2	2	7	2	1	3	1

Gold = 98 -100%, Green = 95 - 97.9%, Grey = 91 - 94.9%, Blue = 85 - 90.9%, Red = <84.9%



love learning
care for everyone
aim high

SCHOOL DIARY

Tue 12th Dec – 1.45pm
KS1 Nativity Performance

Wed 13th Dec – 9.30am
KS1 Nativity Performance

Wed 13th Dec – 5.30 to 8pm
FAFA – Gingerbread House Event (Adults Only)

Thurs 14th – 11am
Tribal Gathering in their Team Rooms

Thur 14th Dec – 1.45pm
KS1 Nativity Performance

Thurs 14th – 2pm
Vicar visiting Yrs5 and 6 to make Christingles

Fri 15th Dec
Whole School Christmas Lunch

Fri 15th Dec
Christmas Jumper Day
(Save the Children - £1 donation)

Mon 18th Dec – 11am
The setting of the festive Tribal challenge (in the hall)

Tue 19th Dec – AM
Tribal Challenge's continue...

Tue 19th Dec – 1.30pm
The Judging of the Tribal Challenge

Wed 20th Dec – 9.10am
End of Term Festive, Celebratory Assembly (to include musical performances)

21st Dec to 1st Jan
Festive Break

Tues 2nd & Wed 3rd Jan
Non-Pupil Days

Tue 9th Jan – 9.30am
EYFS Sept 18 Intake - Show-around

This week's Golden Dustpan Award Goes To...

Award Goes To...



Elm Class



To this week's Head Teacher Award Winners:

Daisy - Ash
Molly - Oak
Thomas - Elm
Tilly - Beech
Alice - Birch
Mubarak - Hazel
Jake - Maple
Byron - Rowan
Hope - Holly
Robbie - Willow
Fraser - Hawthorn
Callum - Sycamore
Ellie-Jai - Aspen
Callum - Chestnut

KS1 Nativity Tickets

A further '1' ticket per family has now been made available to order via SIMS Agora. However there are not enough tickets for every child so they will be offered on a first come first served basis.



There are **NO** teacher led clubs next week.

RAD Sports Hockey, Rugby and Multi-Skills **will run** as normal next week.



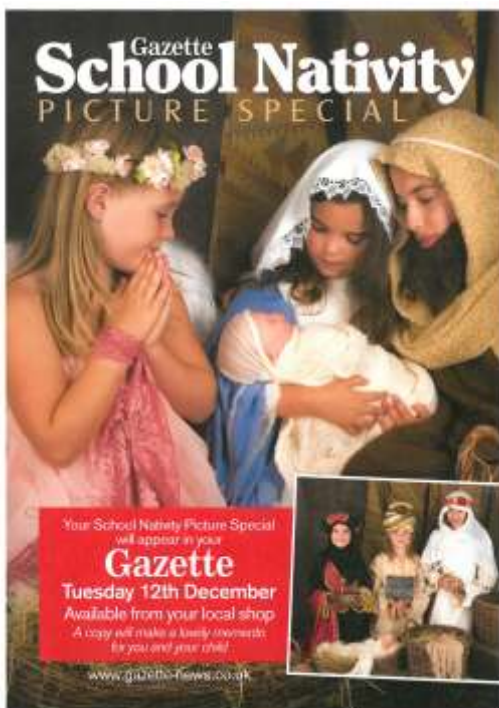
Unclaimed Raffle Prizes are awaiting collection from Mrs Debattista (Birch Class) for the following tickets...

**313/340/424/24
475 & 476**

This Week's Presentation Awards go to...



Emma - Elm
Emma - Willow
Sheyi - Sycamore



DEAR PARENTS

Correspondence Sent Out This Week

Missed letters can be download from the school's website or requested from the school

- Whole School – New House System Letter
- Years 3 to 6 - Extra-Curricular Music Lessons Email
- Beech Class – Miss West Email
- Whole School – Festive update Email

Helpful articles in the current online edition of Parent Zone include...



Fake News

What is fake news? Who can you trust? Nicky Cox, editor in chief of First News, offers her advice for parents.



Mood-altering substances

Mentor UK offers advice on how to talk to your child about legal and illegal substances that may alter their mood or behaviour.

In case you missed it...

[Child-friendly T&Cs: what parents should know](#)

What exactly is your child signing up for when they tick that little box to use an online service?