



QUEEN BOUDICA PRIMARY SCHOOL



Tel: 01206 844654

Email: admin@qbps.essex.sch.uk

Website: www.qbps.essex.sch.uk

Address: Cowper Crescent,
Colchester, Essex, CO4 5XT

School Newsletter

23rd Feb 2018

EYFS

We have had a busy week this week blasting off into space! The children have enjoyed finding out more about the planets and our solar system, some of them wrote their own fact cards. In cooking we all made our own moon dough using flour and oil and we added food colouring and glitter to make it sparkle! The children have been busy in the new role-play corners acting as astronauts and exploring the dark tent. We have been practising our subtraction skills, using counters to help us and everyone tried really hard to record their own number sentences.

Oak class had a lovely time at the woods this week making their own Stick men from natural resources they could find around them. Ash class will be going to the woods next week on Tuesday 27th February. Please make sure that your child is wrapped up with lots of warm layers as the forecast suggests the temperature is set to drop!

We hope you all have a lovely weekend and look forward to seeing you Monday.

Dear Parents and Carers,

We hope you've all been wrapped up warm during these last few cold days! We believe that next week will bring further wintry weather, so please do ensure that the children continue to come to school with warm coats, hats and gloves etc. We're sure that Spring will arrive eventually!

We're all really looking forward to next week in school, with Year 4 enjoying a 'Chocolate Tasting' week in connection with their topic on The Mayans. Mrs. Cox and I do hope that they are going to need some volunteers!

Next Thursday, March 1st is World Book Day, and as in other years, children are encouraged to come to school dressed as their favourite character. Please note that there is an accompanying letter regarding the opportunity to return to school in the evening for Bedtime Stories and a Book Fair being held in the hall. We're really looking forward to seeing some fantastic outfits: thank you for your support. Thank you also to all the staff members for facilitating the Bedtime Stories, and to Mrs. Morgan-Soane for co-ordinating the event.

We were delighted to receive the news last Monday that our application last summer to Foyles for additional funding to support the development of our library facility has resulted in a grant of £5000! This was a lovely start to the half term and we're greatly looking forward to spending the money. Thank you to Mrs. Morgan-Soane for her work to complete the original bid which will benefit all pupils in school.

Wishing you all an enjoyable weekend,

Clare Woodward

Ms Clare Woodward - Head Teacher

Reception & KS1 Attendance & Punctuality Monitor

Attendance for this Week: **96.73%**

Harry the Happy Hippo Lenny the Learned Lion Daisy the Determined Dragon	Ash YrR 98.09%	Oak YrR 92.54%	Elm Yr1 98.98%	Beech Yr1 96.55%	Birch Yr2 96.55%	Hazel Yr2 97.10%
Absences	4	17	3	10	10	9
Lateness				1	2	1

Gold = 98 -100%, Green = 95 – 97.9%, Grey = 91 – 94.9%, Blue = 85 – 90.9%, Red = <84.9%


Year 5 FREE Bikeability (Cycle proficiency) Courses

The closing date for reserving your child's place is this Monday 26th February. NO applications will be accepted after 9am on Monday 26th.

Please be clear - We will **not** be able to add any late requests on to the courses as all unused spaces will have been handed back to the organisers to offer to other schools.

KS2 Attendance & Punctuality Monitor

Attendance for this Week: **94.80%**

	Maple Yr3 90.66%	Rowan Yr3 98.67%	Holly Yr4 94%	Willow Yr4 97.93%	Hawthorn Yr5 96.43%	Sycamore Yr5 90.33%	Chestnut Yr6 95.33%	Aspen Yr6 95.08%
Absences	27	4	18	6	10	29	14	15
Lateness	1			5	2	3	3	1

Gold = 98 -100%, Green = 95 – 97.9%, Grey = 91 – 94.9%, Blue = 85 – 90.9%, Red = <84.9%



love learning
care for everyone
aim high

Thank You

Mrs O'Connor asked that we pass her sincere thanks on to the very kind person that handed her lost phone into the school office yesterday.

She was both thrilled and relieved to get it back and so very grateful to you!



This Weeks
Character Counts
Award was
presented to:
Safiyah in
Holly Class

For: - Always working hard and trying her best. Safiyah is a kind and friendly person who cares for everyone and everything.
She is the perfect representation of the Purple promises!



To this week's Head Teacher
Award Winners:

Farah - Ash Class
Ayesha - Oak Class
Sara - Elm Class
Zeenya - Beech Class
Freya - Birch Class
Isabelle - Hazel Class
Ryan - Maple Class
Poppy-May - Rowan Class
Yuchen - Holly Class
Dylan - Willow Class
Joseph - Hawthorn Class
Imogen - Sycamore Class
Esme - Aspen Class
Joel - Chestnut Class

Special Music Teacher Award:

Amber - Willow Class
Olivia - Rowan Class

Spelling Support – EYFS & KS1

In Key Stage 1, children are asked to spend part of their time at home investigating spelling rules and patterns. Children who do this practise regularly, tend to score better in tests, as well as applying their knowledge in their books. An initial list showing the spelling pattern will be found in your child's spelling book and then they can explore the pattern further by searching in books and on the computer. After being asked about spelling rules during Parent Consultations, I have found the following website which lists several words for each spelling pattern - I hope you find it useful to support your practise at home:

<http://www.fishermarriott.com/StarSpell/PhonicsWordLists>

Spelling rules are complex and many - the 14 most common can be found and explained here:

<https://www.understood.org/en/learning-attention-issues/child-learning-disabilities/reading-issues/14-phonics-rules-for-reading-and-spelling#slide-1>

When you are looking at a particular sound (for example 'ai' or 'ay'), try googling exactly that - 'ai or ay?' Google will then help you with tips e.g. *You usually find 'ai' in the middle of a word and 'ay' at the end of a word.*

If you need any further help or ideas to help with spelling practice, please do speak to your child's class teacher for advice.

Miss Andrews – EYFS & KS1 Leader

This Week's
Presentation Awards go
to...



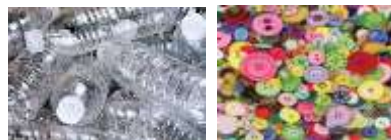
Josie - Hazel Class
Emma - Chestnut Class

This week's Golden Dustpan

Award Goes To...



Elm Class



Bottles & Buttons Needed!

Could you save up your ribbed plastic water and soft drink bottles, and have a rummage around for any spare buttons you could donate to Breakfast Club for their next craft activity please?

Thank you ever so much!



Correspondence Sent Out This Week

Missed letters can be download from the school's website or requested from the school office.

- Football Club – Match Permissions
- Year 1 -Highwood's Country Park Visit
- Year 2 – SATS Meeting
- Whole School – World Book Day Letter
- Whole School – World Book Day £1 Token

POLITE PARKING REMINDER

Parents are not permitted to use the staff carpark at *any time*, unless they hold a blue disabled badge

SCHOOL DIARY

Fri 23rd March

Football Club – Home game (Parsons Heath)

Thurs 1st March

- World Book Day
- Bedtime Story Event

Thurs 1st March

Football Club – Home game (Home Farm)

Fri 2nd March

Football Club – Home game (Layer)

Mon 5th to Thur 8th March

Group 1 & 2 Bikeability Courses (Yr5)

Thurs 8th to Tues 13th March (3.15 to 3.45)

Scholastic Book Fair

Thur 15th March

Football Club – Away game (St. Johns)

Mon 19th to Thur 22nd March

Group 3 & 4 Bikeability Courses (Yr5)

Sat 24th March

Children's University Graduation

Mon 26th to Tue 27th March

Group 5 Bikeability Course (Yr5)

Mon 23rd April

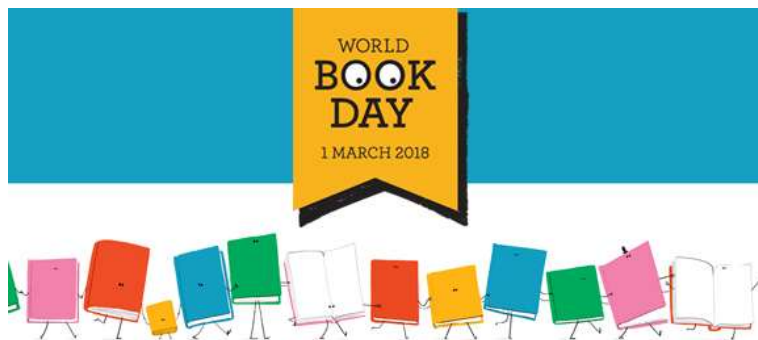
Year 4 Swimming Lessons Begin

Mon 4th to Wed 6th May

Year 5 Residential Trip

Sat 23rd June

FAFA Summer BBQ



World Book Non Uniform Day - £1 Donation

Dress as your favourite book character on Thursday 1st

We are inviting pupils and staff to come into school dressed up as their favourite book character for a fun day of story sharing.

Please send your child/ren in with their £1 donation, which will be forwarded on to 'Book Aid International', a charity that sends books to children in deprived areas of Africa.



Parish of Myland
St. Michael's Church



Children's Easter Service & Treasure Hunt



A great afternoon of fun. After the short Easter service, you follow the trail, look for landmarks and collect treasure. At the end of the treasure hunt, we return to Myland Parish Halls for refreshments and every child receives an Easter egg.

Good Friday 30th March 3.00pm

*Ticket only event for children up to school year 6
(children must be accompanied by an adult)*

Ticket Price £3.50

On sale until 29 March

Tickets available from:

Church Office (open Mon – Fri, 9am – 1pm)

Myland School – Suzanne Price

Queen Boudica School – School Office

Braiswick School – School Office

**It is COLD
Outside!**



Pupils are complaining of being 'freezing cold' when outside at break and lunchtimes many with no coats and wearing ankle socks - Please make sure that your child/ren come into school wearing weather appropriate layers.

ALL children MUST have a warm coat with them daily and preferably, a hat, glove and scarf set too. No more ankle socks please!

NEW School Uniform Supplier Now LIVE



School Uniform – Our Policy

School Uniform:-

Grey or black tailored shorts, trousers, skirt or pinafore.

Purple cardigan, sweatshirt or fleece (preferably with school logo).

White polo-shirt (preferably with school logo).

Lilac gingham dress (summer term).

Plain black, grey or white socks.

Plain black, grey or white tights.

Black smart shoes (not sandals or trainers)

PE Kit:

Indoor kit:

Black shorts
White t-shirt (preferably with school logo)
Plain plimsolls or trainers

Outdoor kit:

As above but with a plain black tracksuit for warmth.

Tribe Challenges/Sports Day:

Parents:- If you are unsure which Tribe your child is part of please check with the school office before ordering their t-shirt

Ordovices Tribe T-Shirt – Blue, Embroidered

Silures Tribe T-Shirt – Green, Embroidered

Iceni Tribe T-Shirt – Red, Embroidered

Trinovantes Tribe T-Shirt – Yellow, Embroidered

Our school uniform is one of the ways in which we help our school to have a strong identity. We encourage children to wear their uniform with pride. **All** pupils are expected to wear our school uniform as detailed. Logo embroidered polo shirts, PE t-shirts, sweatshirts and cardigans supplied by Anglia School Wear are preferred but not compulsory.

- If earrings are worn to school, they must be small stud type only and will need to be removed by the pupil or their parent (at home) prior to any PE activity.
- Jewellery is not allowed; although children are welcome to wear a watch.
- Neat and tidy haircuts are required for school. Long hair must be tied up.
- Hair embellishments such as large bows may not be worn but discreet clips and hairbands in school colours are acceptable.

Please support our guidelines by ensuring your child/ren come into school wearing the correct uniform and keep a regular eye on footwear, socks and tights worn. Pupils wearing non-listed items will be reminded of the correct items to wear.

Logo'd items can now be ordered through our
NEW Supplier:- Anglia Sports & Schoolwear Ltd.
www.yourschoolwear.co.uk

Items Available	Sizes Available	Item Price (from)
Polo Shirt – White, Embroidered	3-4yrs, 5-6yrs, 7-8yrs, 9-10yrs, XXS, XS, S	£6.25
Crewneck Sweatshirt – Purple, Embroidered	24", 26", 28", 30", 32", 34"	£9.25
	XS (36")*	*£11.25
Sweat Cardigan - Purple, Embroidered	24", 26", 28", 30", 32", 34"	£11.25
	XS(36")*	*£13.25
V-Neck Sweatshirt - Purple, Embroidered	24", 26", 28", 30", 32", 34"	£9.75
	XS(36")*	*£11.75
PE T-shirt – White, Embroidered	22" (3/4), 24" (4/5), 26" (5/6), 28" (6/7), 30" (8/9), 32" (10/11), 34" (12),	White PE T-Shirt £5
Ordovices Tribe T-Shirt – Blue, Embroidered	22" (3/4), 24" (4/5), 26" (5/6), 28" (6/7), 30" (8/9), 32" (10/11), 34" (12),	Tribe Colours 22" to 34" £5.50
Silures Tribe T-Shirt – Green, Embroidered		Tribe Colours 36" & 38"
Iceni Tribe T-Shirt – Red, Embroidered	36" (XS), 38" (S)	£6.30
Trinovantes Tribe T-Shirt – Yellow, Embroidered	40" (M), 42" (L), 44" (XL)	Tribe Colours 40" to 44" £7.56
Shadow Stripe Shorts – Black	18"/20", 22"/24", 26"/28	£4.75
	*30"/32", *34"/36", *38"/40"	*£5.50
Zip up Fleece – Purple, Embroidered	3-4yrs, 5-6yrs, 7-7yrs, 9-10yrs, 11-12yrs, 13yrs	£12.50
Reversible (Waterproof/Fleece) Jacket	3-4yrs, 5-6yrs, 7-7yrs, 9-10yrs, 11-12yrs, 13yrs.	£19
	Sml* & Med*	*£22.75
Primary Backpack - Purple, Embroidered	-	£11
Classic Bookbag - Purple, Embroidered	-	£5.75
Junior Document Case - Purple, Embroidered	-	£10.50